



RUCHI NAHAR

Research Analyst

HCL TECHNOLOGIES LTD

DATE- 12 JULY 2024

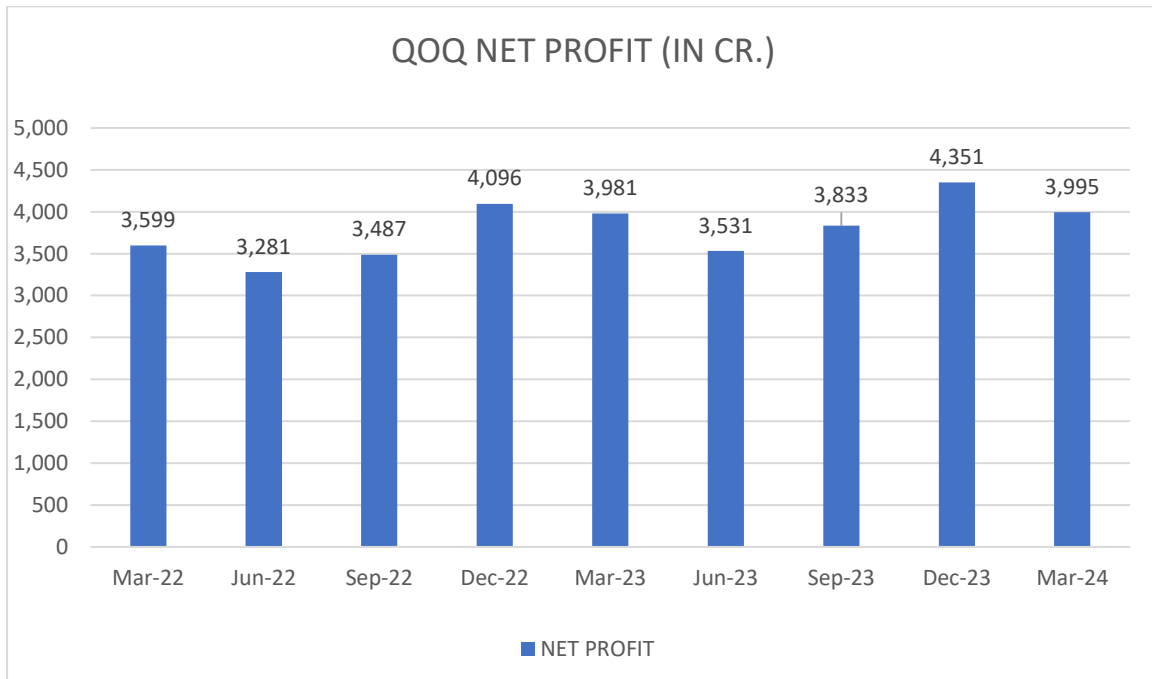
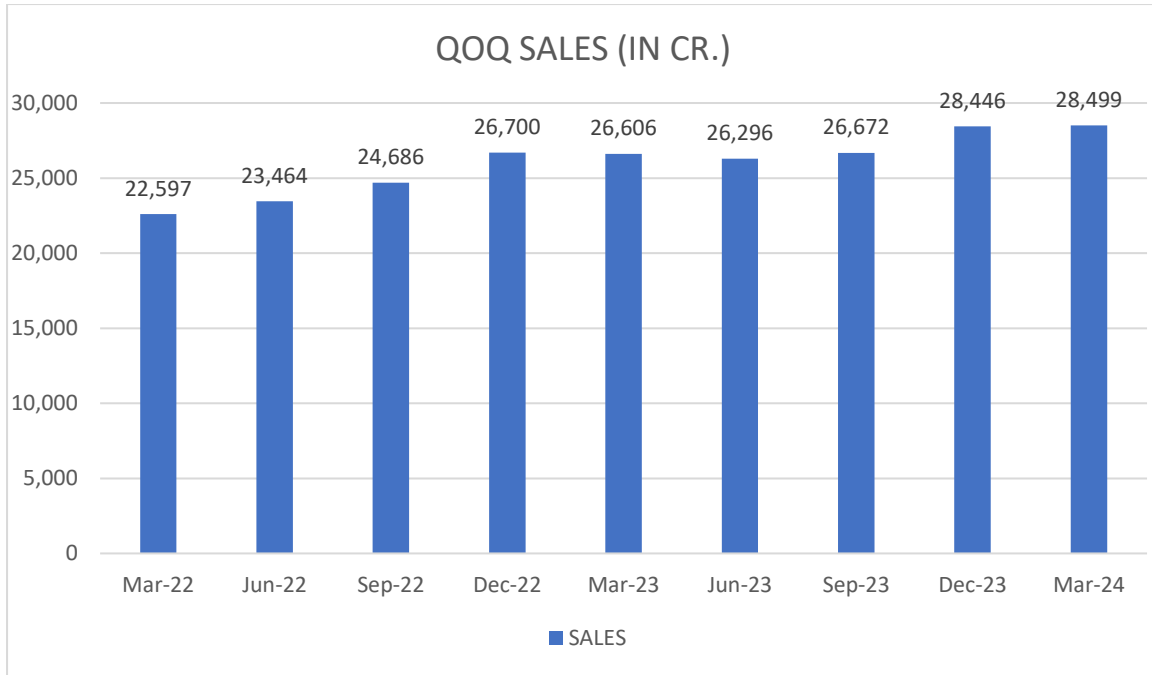
About Company

HCL Tech is a prominent global IT services company. Since entering the global market with its IPO in 1999, HCL Tech has concentrated on transformational outsourcing. The company offers a comprehensive portfolio of services, including software-driven IT solutions, remote infrastructure management, engineering and R&D services, and BPO. Leveraging its vast global offshore infrastructure and network of offices in 46 countries, HCL Tech delivers multi-service solutions across key industry verticals.

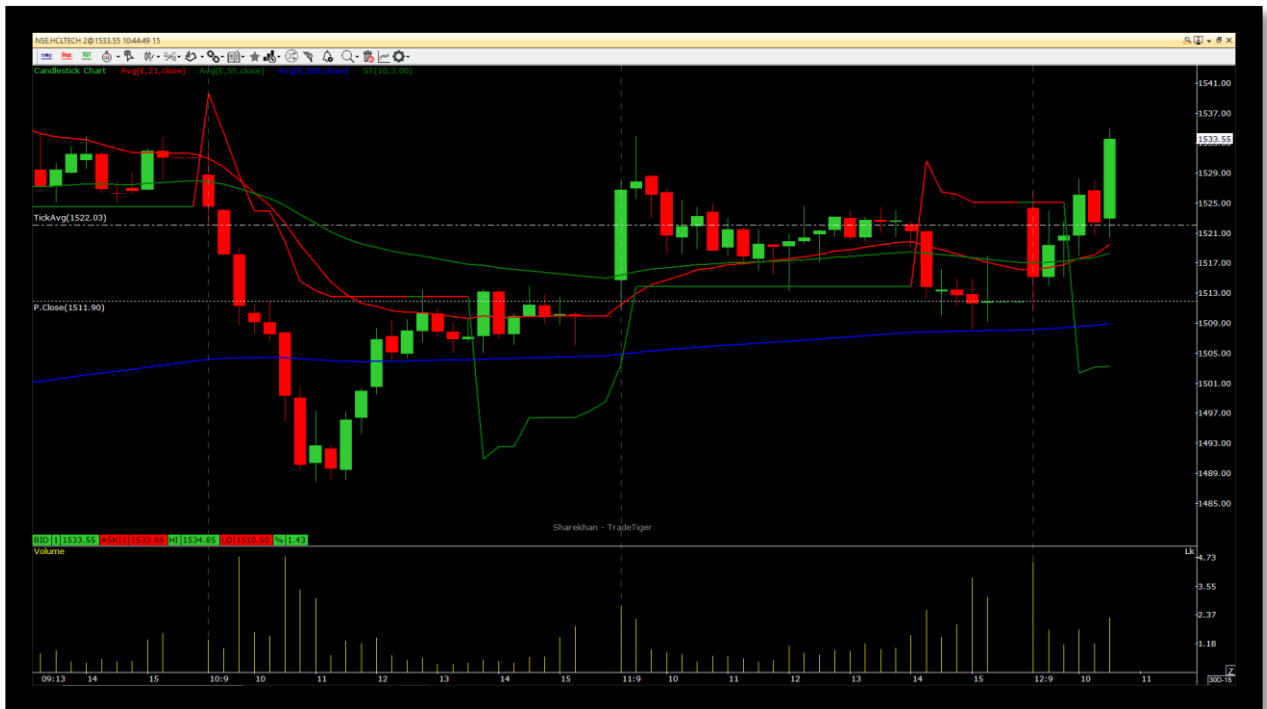
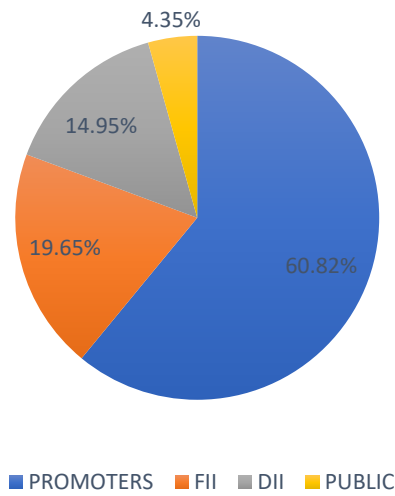
OUR RECOMMENDATION:

OPTION INSIGHT: BUY HCL TECH 1540 CALL BETWEEN 30-31 TARGETS 44-64 STOP LOSS BELOW 19.

MARKET CAP	P/E	DIVIDEND YIELD	ROCE	ROE	FACE VALUE	3YEARS SALES GROWTH	3YEARS PROFIT GROWTH
RS. 4,24,661CR.	27.1	3.31 %	29.8 %	23.5 %	RS 2.00	13%	13%



SHAREHOLDING PATTERN MARCH 24



TECHNICAL ANALYSIS

The stock was trending above supertrend and 34 moving average indicator. The rising volume in 15 min chart and bullish candles shows an upward trend. Also, today Nifty IT was also moving in upward direction. If we look at the fundamentals of the company sales is rising on quarterly basis from Rs 28,446 cr. in Dec 23 to Rs

28,499 cr. in March 24 and Net Profit has increased on yearly basis from Rs 14,845 cr. in March 23 to Rs 15,710 cr. in March 24. There's an increase in the reserves of the company from Rs 64,862 cr in March 23 to Rs 67,720 cr in March 24. Promoter holding is 60.82%. On the basis of above information, we gave Buy signal in HCL Tech 1540 Call.

DISCLAIMER

I, **Ruchi Nahar**, SEBI Registered Research Analyst (**INH000014544**) comply with the qualification and certification requirements under SEBI (Research Analyst) Regulations, 2014. I have qualified **CA, CS and MBA**, has over 11 years of experience in MNCs, culminating as Head of Finance. I now leverage my expertise to guide stock market investors with strategic insights. All of the views expressed in research reports and recommendations issued by me reflect my personal views about the subject company or companies at the given point of time and I do not receive/accept any kind of compensation, directly or indirectly related to specific recommendations or views expressed in reports issued by me. I/my relatives do not at any point of time of issuing the reports have any material conflict of interest in the subject company neither I was/am/will be engaged in market making activity for the subject company. The investments discussed or views expressed in reports and recommendations issued by me may not be suitable for all investors. The user assumes the entire risk of any use made of this information. I nor any person connected with my report, accepts any liability arising from the use of research document. The recipients of research document should rely on their own investigations and should consult their own financial advisors to determine merit and risks of such investments based on their own risk appetite. Price and value of the investments referred to in this material may go up or down. Past performance is not a guide for future performance. Certain transactions including those involving futures, options and other derivatives as well as non-investment grade securities involve substantial risk and are not suitable for all investors. Reports and recommendations based on technical analysis centres on studying charts of a stock's price movement and trading volume, as opposed to focusing on a company's fundamentals and as such, may not match with a report on a company's fundamentals. Opinions expressed in research reports & recommendations will be based on the current opinions as of the date appearing in research report & recommendations. While I endeavour to update on a reasonable basis the information discussed in research reports, there may be regulatory, compliance, or other reasons that prevent me from doing so. Prospective investors and others are cautioned that any forward-looking statements are not predictions and may be subject to change without notice. So far as reports include current or historic information, it is believed to be reliable, although its accuracy and completeness cannot be guaranteed. Investment in securities market is subject to market risks. Read all the related documents carefully before investing. Registration granted by SEBI, and certification from NISM in no way guarantee performance of the intermediary or provide any assurance of returns to investors.

